

Celestix® BMC2500

Patch Management Appliance

The Right Solution for Patching Large and Distributed Networks



Software bugs and network-security threats make deploying patches a vital concern. At large-enterprise data networks, scanning hundreds of servers and thousands of endpoints for vulnerabilities and patching them by hand is prohibitive in regard to time and cost. Automation is the best answer. BMC2500™ appliances from Celestix integrate BMC® Patch Manager software with Celestix premier appliance technology to deliver the most effective and economical solution for automatically deploying and managing patches for large and distributed data networks.

BMC® PATCH MANAGER

Automated patching

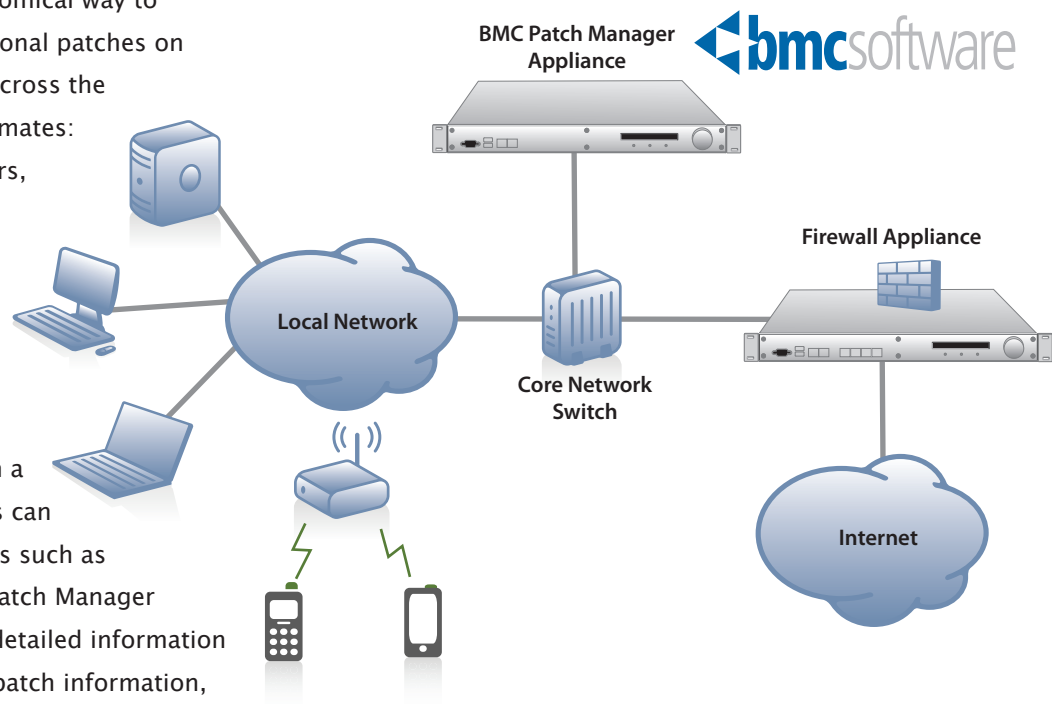
BMC® Patch Manager is the easy, economical way to deploy and manage security and functional patches on desktops, laptops, PDAs, and servers across the enterprise. BMC® Patch Manager automates: patch collection from software providers, preparation, testing, staging, deployment, and auditing.

Improve network visibility

BMC Patch Manager lets administrators view all patch data, including patch dependencies, through a common user interface. Administrators can customize patch information for factors such as severity levels and descriptions. BMC Patch Manager creates a comprehensive inventory of detailed information about endpoints: hardware, software, patch information, service packs, hot fixes, and antivirus software.

Feature Summary

- BMC Patch Manager
- Appliance form factor
- Web GUI for remote management
- LCD front panel for easy network configuration and status display
- One-button system recovery to factory default
- Last Good Version backup and restoration for working configurations
- Install patch management solution in less than 15 minutes
- Hardened Linux based COSMOS operating system
- True Gigabit network throughput
- PCI-Express architecture
- Celestix Update System
- For large enterprise and numerous remote sites



celestix

Policy-based management

BMC® Patch Manager lets administrators filter patch data, sort by MITRE's Common Vulnerabilities and Exposures (CVE) ID for Microsoft patches, and set policies to automatically receive e-mail or visual alerts regarding new patches. Administrators can deploy patches based either on security policies for normal operations or for specific emergency deployments. After administrators define a patch policy, BMC Patch Manager automatically targets the machines the policy covers.

Patch testing

BMC Patch Manager lets administrators group test patch installations in sample environments. This lets administrators analyze the impact of a patch and identify any patch conflicts or other problems before broad installation rollouts.

CELESTIX APPLIANCES OPTIMIZE PATCH MANAGEMENT

Scorpio-X hardware

BMC2500 appliances employ Celestix' Scorpio-X 4th generation appliance-hardware platform. Celestix engineers Scorpio-X hardware for high reliability and reduced power consumption. Celestix engineers employ high-speed, high-throughput architecture and components throughout our appliance hardware platform to deliver BMC Patch Manager with maximum performance.

COSMOS™ Appliance Engine

Celestix' COSMOS appliance engine software uses a custom Linux-based kernel to deliver industry-leading ease of use features that improve response time and minimize TCO.

- Web UI - Configure and manage BMC Patch Manager software and the appliance platform from a single UI.
- Jog dial & LCD UI - Headless communication with the network for fast setup
- One-Touch recovery - Returns appliance to factory presets
- Last Good Version - Fast, backup and restoration of working configurations

- Celestix Software Update System - Manage updates and patches for appliance OS, appliance engine and BMC Patch Manager from a single UI with automatic or manual updates

Technical Specifications:

- Processor and Memory
 - Intel Celeron (533MHz/256k) processor
 - 1GB of 667MHz DDR2 SDRAM
 - 533MHz frontside bus
- Core Logic Chipset: Intel 945G/GZ + ICH7R
- PCI-Express Architecture
- One 500GB hard drive
- Two Intel 82573L Gigabit Ethernet NIC (PCIe)
- Hardware monitor and fan speed controller
- One serial console, three USB ports (two in front and one on the back)
- 40x2 character LCD display + Jog Dial
- Web user interface for network configuration
- Software update services
- Reset to factory default
- Power Supply: 300W, universal AC input, with power switch and temperature-controlled fan.
- Form Factor: Compact 1U rack mountable
- Dimensions: 17.5"(W) x 13.0"(D) x 1.73" (H)
- Regulatory Approvals: UL, FCC, CE, CB, C-Tick and RoHS.

For more information about BMC2500 appliances, contact Celestix today at:



Americas

+1 510 668.0700



Singapore

+65 6781.0700



United Kingdom

+44 (0) 1189 553276



India

+91 44 3910 3538



48001 Fremont Boulevard
Fremont, California 94538
www.celestix.com