

celestix

WSX

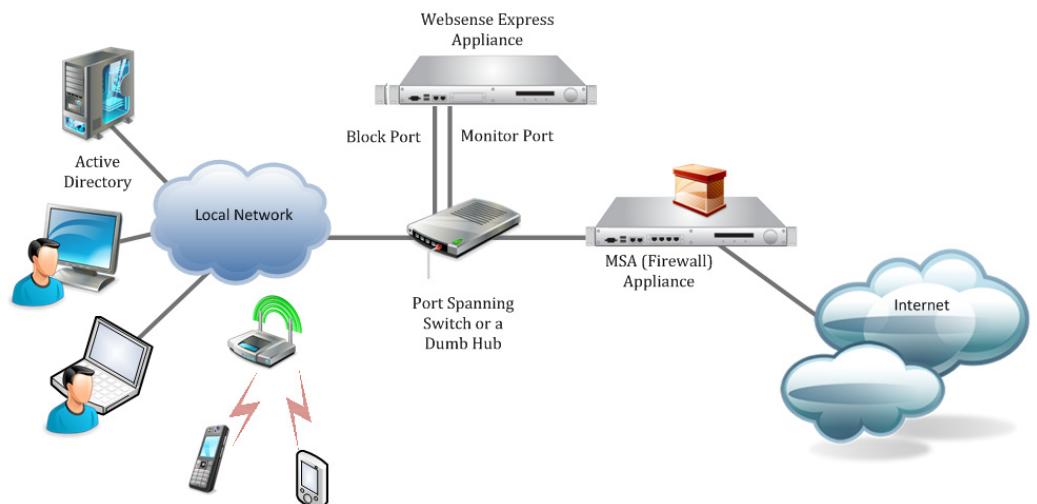


Unsupervised Internet use by your employees impacts productivity and wastes network bandwidth. Infected websites can impair user systems and networks. WSX™ appliances from Celestix with Websense® Express software are the easiest and most cost-effective way for SMB's and branch offices to manage and safeguard Internet usage in the workplace. WSX appliances monitor Internet requests from users and apply policy-based filters to enable or block those requests. You can apply flexible filtering policies to different clients such as users, groups, domains / organizational units, workstations, or networks. WSX appliances also filter network applications by protocol such as TCP, HTTP, instant messaging, streaming media, file sharing, file transfer, Internet mail, and others.

Feature Highlights

- Easy to deploy – With Websense Express preinstalled, installation typically takes 20 minutes
- The appliance Web UI is integrated with Websense Express for easy remote appliance installation, configuration and maintenance
- Backup “Last Good Version” configurations on the appliance’s hard drive to quickly restore your working configurations
- The unique Celestix software update system updates: Websense Express, OS, and Celestix appliance engine from a single UI; keeping your software updated has never been easier.
- One-button reset to factory default settings facilitates fast disaster recovery
- Real-time URL and Protocol Monitors for effective protocol and bandwidth management
- Proactive Protection from Internet threats

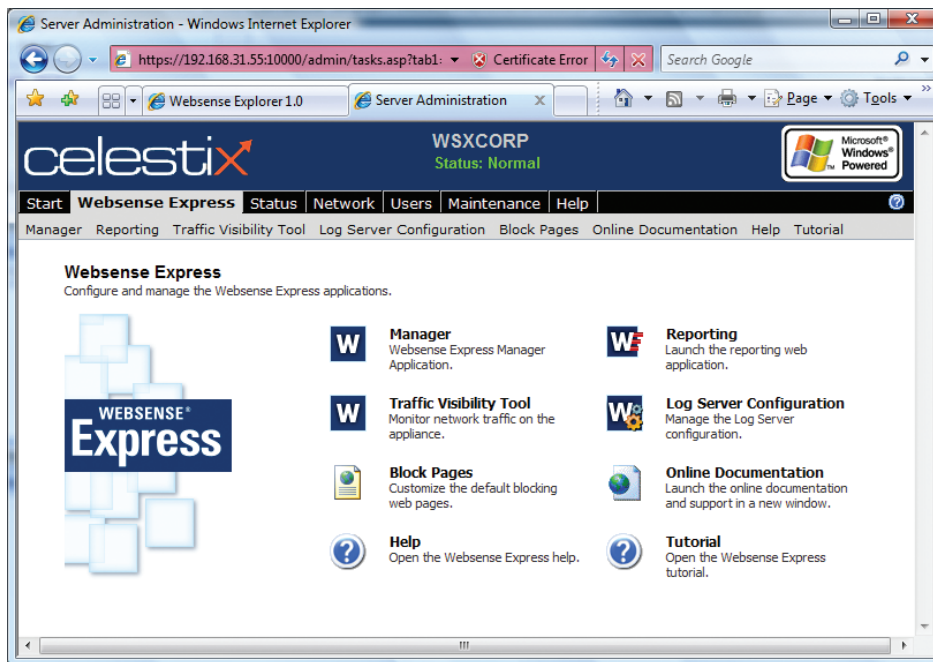
Typical Celestix WSX Appliance Deployment



You typically deploy WSX appliances on the internal network where it can see the intended traffic. Each WSX appliance has two Gigabit Ethernet ports: a Block port and a Monitor port. The Block port is the management port for remote administration of the appliance. Also, the Websense Express application uses the Block port to communicate with clients when they violate Internet access policies. The Monitor port sees all traffic from the LAN being monitored.

Your organization can benefit from the deployment of Celestix WSX appliance in a number ways. These include:

- Visibility into your organization's Internet activity and risks such as security threats and bandwidth usage.
- Increased employee productivity by enforcing Internet usage policies.
- Increased security against Web-based threats not addressed by antivirus or firewalls by blocking threats at the source.



Order Information

Model	Users	SKU
WSX2000	0 - 100	WSX-50110-160
WSX4000	100 - 500	WSX-50220-160



Technical Specifications:

- Processor and Memory

WSX2000 Security Appliance

- Intel Celeron (533MHz/256KB) processor
- 3GB of 667MHz DDR2 SDRAM
- 533MHz frontside bus

WSX4000 Security Appliance

- Intel Pentium D Dual Core (800MHz/2x1MB) processor
- 3GB of 667MHz DDR2 SDRAM
- 800MHz frontside bus

- Core Logic Chipset: Intel 945G/GZ + ICH7R
- PCI-Express Architecture
- One 160GB 7,200-rpm Serial ATA-II hard drive
- Two Intel 82573L Gigabit Ethernet NIC (PCIe)
- Hardware monitor and fan speed controller
- One serial console, three USB ports (two in front and one on the back)
- 40x2 character LCD display + Jog Dial
- Web user interface for network and security application configuration
- Software update services
- Reset to factory default or last known good version
- Power Supply: 300W, universal AC input, with power switch and temperature-controlled fan.
- Form Factor: Compact 1U rack mountable
- Dimensions:
1U 17.5"(W) x 13.0"(D) x 1.73"(H)
- Regulatory Approvals: UL, FCC, CE, CB, C-Tick and RoHS.



48001 Fremont Boulevard, Fremont, California 94538

USA +1 510.668.0700

Asia +65 6781.0700

India +91 44 39143044

EMEA +44 (0) 11 8321.8289

www.celestix.com

©2007 Celestix Networks Inc. All Rights Reserved. Celestix and Celestix logo are trademarks of Celestix Networks, Inc. Microsoft, Active Directory, Windows, Windows NT and Windows logo are either trademarks or registered trademarks of Microsoft Corporation in the United States and/or other countries. All other products and company names mentioned are trademarks or registered trademarks of their respective owners.

Printed in Singapore. Part number: DS-WSACL-03